

Please find below a selection of images to be used for editorial purposes if source is quoted. Images in high resolution can be provided on request. Contact: [M.Bussemakers@ncmls.ru.nl](mailto:M.Bussemakers@ncmls.ru.nl)

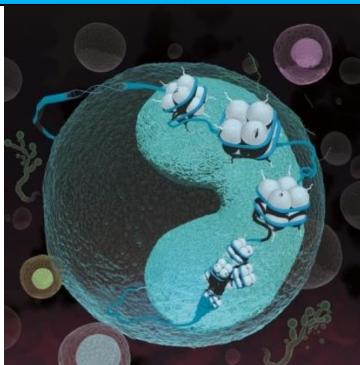
### People



**Caption:** Prof. Dr Hendrik Stunnenberg, Radboud Institute for Molecular Life Sciences – Head of Department of Molecular Biology and Coordinator of the EU FP7 High Impact Project BLUEPRINT

**Source:** © Radboud Institute for Molecular Life Sciences

### Graphics



**Caption:** The nucleosome: a complex structure consisting of DNA being wrapped around complexes of proteins (histones). The nucleosome is the major carrier of epigenetic information, and can be affected by a variety of epigenetic mechanisms.

**Source:** © Spencer-Phillips, EMBL-EBI



**Caption:** Methylated DNA molecule. DNA methylation plays an important role for epigenetic gene regulation in development and cancer.

**Source:** © Christoph Bock, CeMM Research Center for Molecular Medicine of the Austrian Academy of Sciences

## In the Laboratory



**Caption:** Next generation sequencing: epigenome mapping in the BLUEPRINT project depends on the interplay of experimental and computational methods.

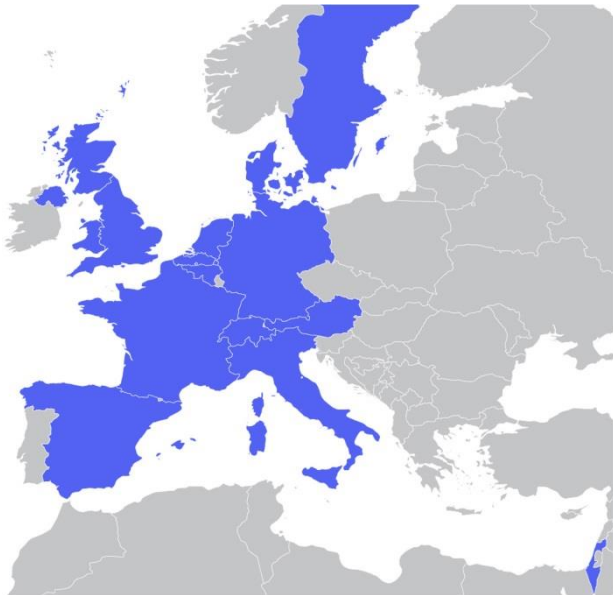
**Source:** © Wolfgang Däuble, CeMM Research Center for Molecular Medicine of the Austrian Academy of Sciences



**Caption:** Cancer epigenetics: a scientist in the laboratory of BLUEPRINT partner Christoph Bock (CeMM, Vienna) investigates epigenome deregulation in leukemia.

**Source:** © Wolfgang Däuble, CeMM Research Center for Molecular Medicine of the Austrian Academy of Sciences

## BLUEPRINT Partners



**Caption:** BLUEPRINT brings together 42 partner organisations (academia, research institutes and industrial partners) from 12 countries.

**Source:** © BLUEPRINT – A BLUEPRINT of Haematopoietic Epigenomes